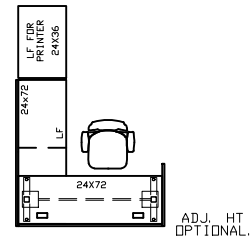
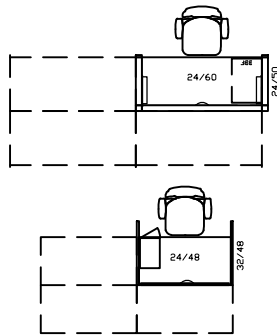
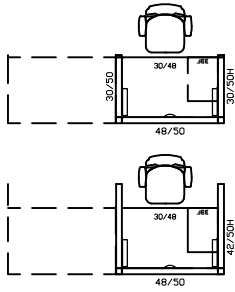


NOTE: OFFICE CONFIGURATIONS MAY VARY ACCORDING TO OFFICE SIZES & LIMITATIONS



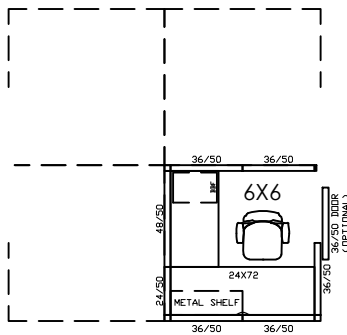
PLASTIC LAMINATE WITH ADJ. HEIGHT BRIDGE

LEVEL ONE WORKSTATION:

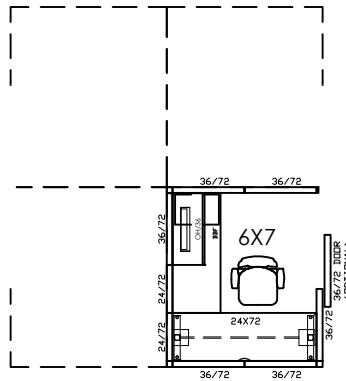
STUDENT: WORKSTATION, MASTERS STUDENT, DOCTORAL STUDENT, AND POST DOCTORAL STAFF

RECEPTIONIST/ ADMINISTRATIVE ASSISTANT:

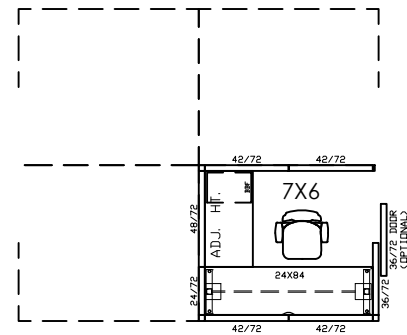
STAFF: STUDENT WORKER, ADMINISTRATIVE ASSOCIATE, OFFICE MANAGER. TYPICALLY PROFESSIONAL STAFF WHO REPORT DIRECTLY TO LEVEL FIVE AND SIX MANAGEMENT.



LEVEL TWO WORKSTATION: 45 - 50 S.F.
TRANSACTION COUNTER - OPTIONAL
LOW PANEL HEIGHT OPTION

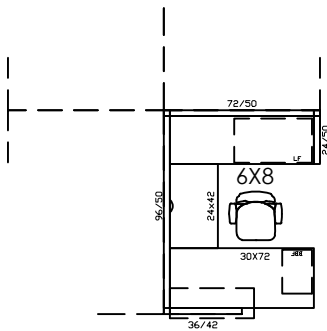


LEVEL TWO WORKSTATION: 45 - 50 S.F.
TRANSACTION COUNTER - OPTIONAL
WITH ADJUSTABLE HEIGHT BRIDGE

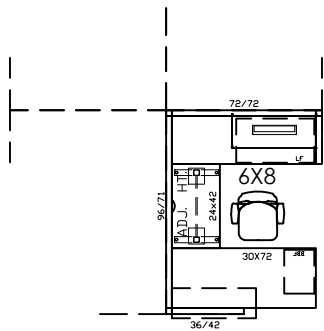


LEVEL TWO WORKSTATION: 45 - 50 S.F.
TRANSACTION COUNTER - OPTIONAL
WITH ADJUSTABLE HEIGHT BRIDGE

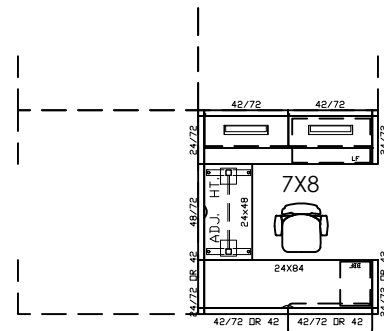
FACULTY & STAFF: ADMINISTRATIVE ASSISTANT, TECHNICIAN, CLERK, PRODUCTION COORDINATOR, AIDE, UNIVERSITY RESEARCH ADMINISTRATOR, POST DOCTORATE, ADJUNCT PROFESSOR, PART TIME LECTURER, PART TIME PROFESSOR, VISITING PROFESSOR.



LEVEL THREE WORKSTATION: 55 - 65 S.F.
TRANSACTION COUNTER - OPTIONAL
LOW PANEL HEIGHT OPTION



LEVEL THREE WORKSTATION: 55 - 65 S.F.
TRANSACTION COUNTER - OPTIONAL
WITH ADJUSTABLE HEIGHT BRIDGE



LEVEL THREE WORKSTATION: 55 - 65 S.F.
TRANSACTION COUNTER - OPTIONAL
WITH ADJUSTABLE HEIGHT BRIDGE

FACULTY & STAFF: ADMINISTRATIVE ASSISTANT OR ASSOCIATE, OFFICE MANAGER, PART TIME LECTURER, VISITING PROFESSOR, TECHNICIAN, CLERK, PRODUCTION COORDINATOR, MANAGERS WHO SUPERVISE PROFESSIONAL STAFF AND WHO REPORT DIRECTLY TO THE DIRECTORS OR OTHER LEVEL THREE PERSONNEL.



BAYLOR UNIVERSITY
WACO, TEXAS

DEPARTMENT OF
FACILITIES MANAGEMENT

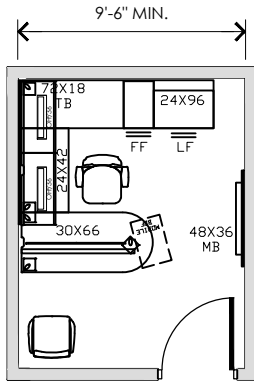
SCALE: 1/8"-1'-0"
PROJECT NO:
PROJECT NAME:
REVISION: Last Updated - 02/21/2022

FACULTY OFFICE STANDARDS

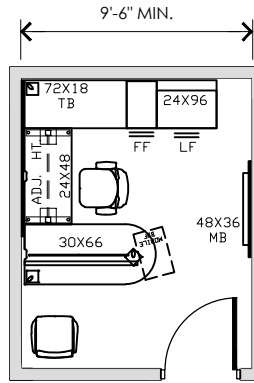
TYPICAL APPLICATIONS FOR STUDENT WORKERS THROUGH VICE PRESIDENTS

STAFF OFFICE STANDARDS

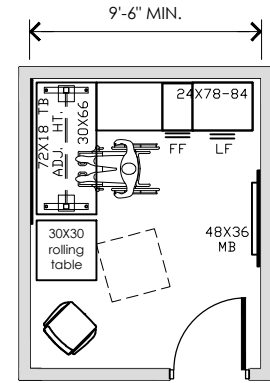
TYPICAL APPLICATIONS FOR STUDENT WORKERS THROUGH ASSISTANT VICE PRESIDENT LEVELS



LEVEL THREE OFFICE: 110 - 130 S.F.
WITH OVERHEAD STORAGE



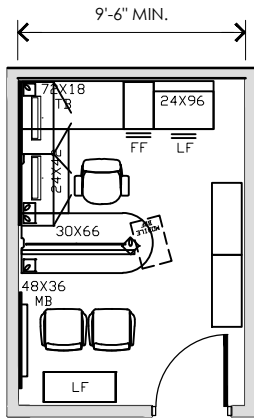
LEVEL THREE OFFICE: 110 - 130 S.F.
WITH ADJUSTABLE HEIGHT BRIDGE



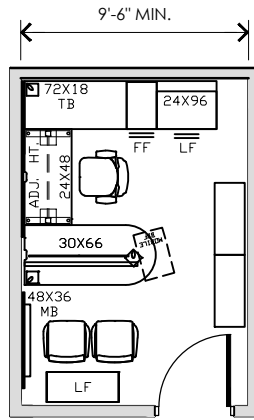
LEVEL 3 ACCESSIBLE OFFICE: 110 - 130 S.F.
WITH ADJUSTABLE HEIGHT BRIDGE

FACULTY: OFFICE MANAGER & BUDGET MANAGER AS DETERMINED BY DEPARTMENT, DEVELOPMENT AND BUSINESS OFFICER.

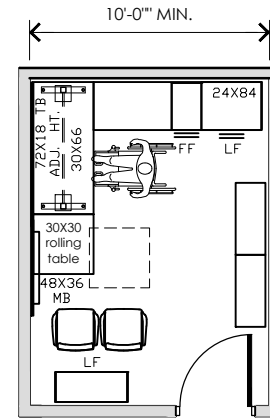
STAFF: ACADEMIC ADVISOR, SENIOR ACADEMIC CONSULTANT, MANAGERS, DIRECTORS, STUDENT RESIDENT DIRECTOR AS DETERMINED BY AVP.



LEVEL FOUR OFFICE: 130 - 150 S.F.
WITH OVERHEAD STORAGE



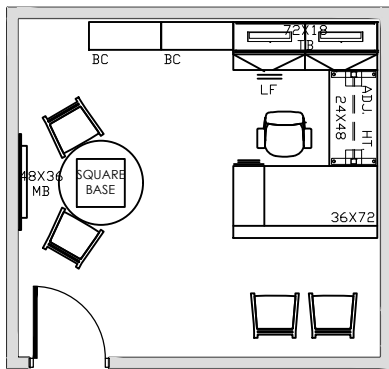
LEVEL FOUR OFFICE: 130 - 150 S.F.
WITH ADJUSTABLE HEIGHT BRIDGE



LEVEL 4 ACCESSIBLE OFFICE: 130 - 150 S.F.

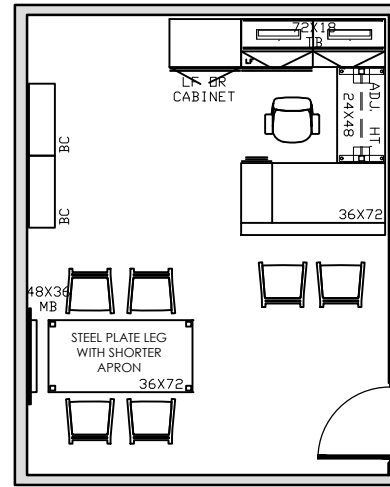
FACULTY: CHERRY AWARD OFFICE, FULL TIME PROFESSOR, FULL TIME LECTURER.

STAFF: DIRECTORS, STUDENT RESIDENT DIRECTOR, OTHER STAFF AS DETERMINED BY AVP.



LEVEL FIVE OFFICE: 175 - 220 S.F.
ADJUSTABLE HEIGHT BRIDGE - OPTIONAL

FACULTY: DEPARTMENT CHAIR, ASSISTANT OR ASSOCIATE VICE PRESIDENT OR DEAN, AND EQUAL OR SIMILAR PROFESSIONAL PERSONNEL REPORTING DIRECTLY TO THE VICE PRESIDENT OR OTHER LEVEL SIX PERSONNEL.



LEVEL SIX OFFICE: 200 - 300 S.F.
ADJUSTABLE HEIGHT BRIDGE - OPTIONAL

FACULTY: DEAN, VICE PRESIDENT, AND EQUAL PROFESSIONAL PERSONNEL REPORTING DIRECTLY TO THE PRESIDENT, GENERAL COUNSEL, AND CHIEF OF STAFF.



BAYLOR UNIVERSITY
WACO, TEXAS

DEPARTMENT OF
FACILITIES MANAGEMENT

SCALE: 1/8"=1'-0"

PROJECT NO:

PROJECT NAME:

REVISION: Last Updated - 02/21/2022

FACULTY OFFICE STANDARDS

TYPICAL APPLICATIONS FOR STUDENT WORKERS THROUGH VICE PRESIDENTS

STAFF OFFICE STANDARDS

TYPICAL APPLICATIONS FOR STUDENT WORKERS THROUGH ASSISTANT VICE PRESIDENT LEVELS