



FURNITURE STANDARDS



March 2022



Baylor University

TABLE OF CONTENTS

NOTATIONS	3-5
CAMPUS OFFICE SIZES	6-7
SUPPORT WORKSTATIONS	
Level One	8-9
Reception/ Administrative Assistant Options	10
Level Two	11-13
Level Three	14-16
OFFICES	
Level Three	17-18
Level Three Accessible	19-20
Level Four	21-22
Level Four Accessible	23-24
Level Five	25-26
Level Six	27-28
Level Five & Six Height Adjustable	29
ADJUSTABLE HEIGHT DESK	30
LOCKERS	31
TASK SEATING	32-34
CONFERENCE SEATING	35-37
BAR HEIGHT STOOL SEATING	38-40
LABORATORY	41
GUEST SEATING	42-43
CLASSROOM TABLES	44
CAFÉ OR BREAK ROOM TABLES	45
CAFÉ OR STUDY TALL TABLES	46
MARKER BOARDS	47-48
PREFERRED CLASSROOM FURNITURE & FINISHES	49
CLASSROOM SEATING	50-53
LOUNGE FURNITURE	54-57
EXTERIOR FURITURE	58-61

NOTATIONS

PURPOSE OF FURNITURE STANDARDS:

- Consistency of quality, warranty, service of furniture purchased for University use
- Consistency of image projected
- Value for University dollars expended
- Consistency among faculty and staff offices

Process for furniture selection and approval:

- If a department cannot find what they need from Ignite Marketplace or needs direction on what they can order, they may contact FM with a request
- FM will meet with the office manager or someone in the department to assess the furniture need, provide assistance with furniture and fabric selections, and a cost estimate or guidance toward the right furniture Dealer for an estimate
- Any ergonomic evaluations are available upon request for either existing or new workstations by EHS
- FM reserves the right to deny or remove furniture or equipment that is a safety concern or deemed inappropriate

NOTATIONS

GENERAL:

The **Baylor University Furniture Standards** is the approved guideline for all new applicable furniture installation projects or requests as documented by Baylor University - Facilities Management and Procurement Services.

– **March 2022 is effective immediately.**

Furniture selection is based upon a “**level system**” that is predetermined by the position held by the Purchaser (user). This level system is comprised of both a furniture mix and finish type which corresponds directly to the University’s appropriate standard square footage allotment per workspace. The University highly recommends compliance with the level system and the guidelines contained within.

Finish and fabric selections, including laminate, wood veneer, metal, hardware, product colors and stains, fabric type and selection are predetermined by the standards specifications and cannot be altered. Any request for alterations from the predetermined specifications will need to be reviewed and approved by Facilities Management.

Product layout and orientation can be determined by the Purchaser to accommodate existing conditions. The Purchaser can request layouts and 3D line drawings from the Dealer for review and approval. Review or design assistance should not be required by Facilities Management for any furnishings listed within this standard.

Facilities Management and/ or Procurement Services reserve the right to accept or deny any requested alterations to the Baylor University Furniture Standards.

NOTATIONS

PURCHASING:

All furnishings noted within this standards package are available and based upon state contracted TXMAS pricing at a minimum, contracts that provide lower pricing is acceptable. Since all furniture listed under the standards are available on contracted pricing, it may not a requirement to obtain three bids for each furniture order.

Please review all inclusions and exclusions within each workstation and level description found within the standards. It is the responsibility of the Purchaser to ensure that their order is accurately quoted by the Dealer prior to submitting an order or purchase order. Once an order or purchase order is submitted, requests for changes typically cannot be met or will be made at an additional cost to the original purchase order Agreement.

Requisitions and purchase orders are required for any orders at or exceeding \$5,000. The Purchaser will prepare an on-line requisition within the Baylor Ignite system which must be approved and budget-checked before a purchase order is submitted to the furniture Dealer. When preparing a requisition, please ensure that the delivery address and contact information is correctly noted and that all appropriate documentation is forwarded to Purchasing.

Once a purchase order has been issued, it will be the Dealer's responsibility to contact the Purchaser to schedule a delivery date and confirm the delivery location. Deliveries are to be made during normal operating hours.

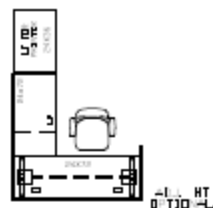
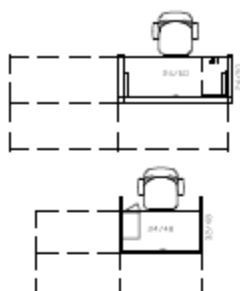
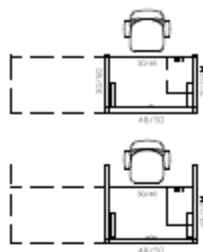
It is the Purchaser's responsibility to receive, visually inspect and sign for (accept) the furniture at the scheduled delivery date. Baylor Facility Services (or other departments) will not be responsible for receiving orders being made by a Purchaser.

At the time of receipt and inspection, the Purchaser should note any unacceptable or damaged items on the delivery ticket, sign the ticket and then obtain a copy. If there are unacceptable or damaged items, it will be the Purchaser's responsibility to follow up with the Dealer directly. Final payment should only be made once all outstanding issues have been resolved.

All furnishings specified in these standards hold a manufacturer's warranty. If any issues arise with any of these furnishings, please contact the Dealer directly to help get the issue resolved.

CAMPUS OFFICE SIZES

NOTE: OFFICE CONFIGURATIONS MAY VARY
ACCORDING TO OFFICE SIZES & LIMITATIONS



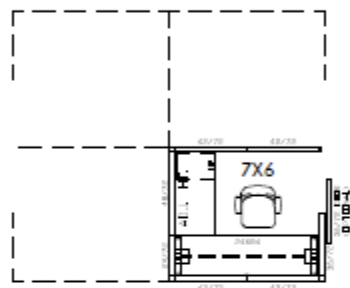
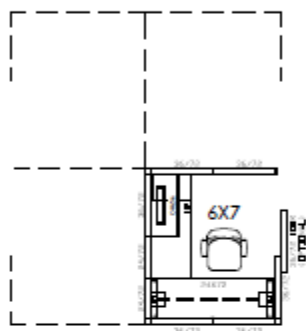
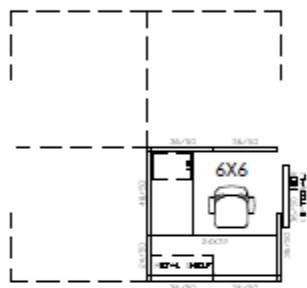
PLASTIC LAMINATE WITH
ADJ. HEIGHT BRIDGE

LEVEL ONE WORKSTATION:

STUDENT: WORKSTATION, MASTERS STUDENT,
DOCTORAL STUDENT, AND POST DOCTORAL
STAFF

RECEPTIONIST/ ADMINISTRATIVE ASSISTANT:

STAFF: STUDENT WORKER, ADMINISTRATIVE ASSOCIATE,
OFFICE MANAGER. TYPICALLY PROFESSIONAL STAFF WHO
REPORT DIRECTLY TO LEVEL FIVE AND SIX MANAGEMENT.



LEVEL TWO WORKSTATION: 45 - 50 S.F.

TRANSACTION COUNTER - OPTIONAL
LOW PANEL HEIGHT OPTION

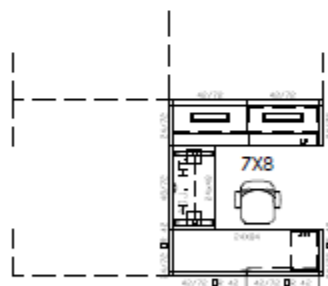
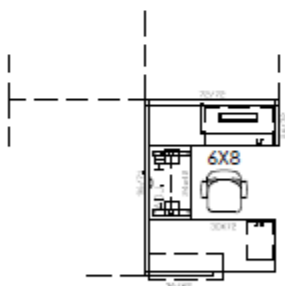
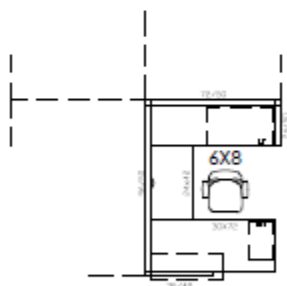
LEVEL TWO WORKSTATION: 45 - 50 S.F.

TRANSACTION COUNTER - OPTIONAL
WITH ADJUSTABLE HEIGHT BRIDGE

LEVEL TWO WORKSTATION: 45 - 50 S.F.

TRANSACTION COUNTER - OPTIONAL
WITH ADJUSTABLE HEIGHT BRIDGE

FACULTY & STAFF: ADMINISTRATIVE ASSISTANT, TECHNICIAN, CLERK, PRODUCTION COORDINATOR, AIDE, UNIVERSITY RESEARCH ADMINISTRATOR, POST DOCTORATE, ADJUNCT PROFESSOR, PART TIME LECTURER, PART TIME PROFESSOR, VISITING PROFESSOR.



LEVEL THREE WORKSTATION: 55 - 65 S.F.

TRANSACTION COUNTER - OPTIONAL
LOW PANEL HEIGHT OPTION

LEVEL THREE WORKSTATION: 55 - 65 S.F.

TRANSACTION COUNTER - OPTIONAL
WITH ADJUSTABLE HEIGHT BRIDGE

LEVEL THREE WORKSTATION: 55 - 65 S.F.

TRANSACTION COUNTER - OPTIONAL
WITH ADJUSTABLE HEIGHT BRIDGE

FACULTY & STAFF: ADMINISTRATIVE ASSISTANT OR ASSOCIATE, OFFICE MANAGER, PART TIME LECTURER, VISITING PROFESSOR, TECHNICIAN, CLERK, PRODUCTION COORDINATOR, MANAGERS WHO SUPERVISE PROFESSIONAL STAFF AND WHO REPORT DIRECTLY TO THE DIRECTORS OR OTHER LEVEL THREE PERSONNEL.



BAYLOR UNIVERSITY
WACO, TEXAS

DEPARTMENT OF
FACILITIES MANAGEMENT

SCALE: 1/8"=1'-0"
PROJECT NO: _____
PROJECT NAME: _____
REVISION: Last Updated - 02/21/2022

FACULTY OFFICE STANDARDS

TYPICAL APPLICATIONS FOR STUDENT WORKERS
THROUGH VICE PRESIDENTS

STAFF OFFICE STANDARDS

TYPICAL APPLICATIONS FOR STUDENT WORKERS
THROUGH ASSISTANT VICE PRESIDENT LEVELS

CAMPUS OFFICE SIZES



LEVEL THREE OFFICE: 110 - 130 S.F.
WITH OVERHEAD STORAGE

FACULTY: OFFICE MANAGER & BUDGET MANAGER AS DETERMINED BY DEPARTMENT, DEVELOPMENT AND BUSINESS OFFICER.

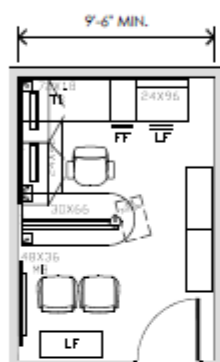
STAFF: ACADEMIC ADVISOR, SENIOR ACADEMIC CONSULTANT, MANAGERS, DIRECTORS, STUDENT RESIDENT DIRECTOR AS DETERMINED BY AVP.



LEVEL THREE OFFICE: 110 - 130 S.F.
WITH ADJUSTABLE HEIGHT BRIDGE



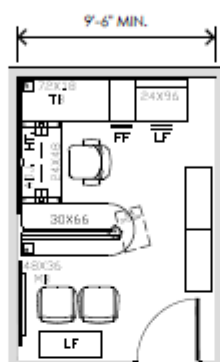
LEVEL 3 ACCESSIBLE OFFICE: 110 - 130 S.F.
WITH ADJUSTABLE HEIGHT BRIDGE



LEVEL FOUR OFFICE: 130 - 150 S.F.
WITH OVERHEAD STORAGE

FACULTY: CHERRY AWARD OFFICE, FULL TIME PROFESSOR, FULL TIME LECTURER.

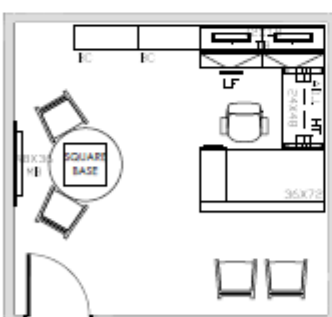
STAFF: DIRECTORS, STUDENT RESIDENT DIRECTOR, OTHER STAFF AS DETERMINED BY AVP.



LEVEL FOUR OFFICE: 130 - 150 S.F.
WITH ADJUSTABLE HEIGHT BRIDGE

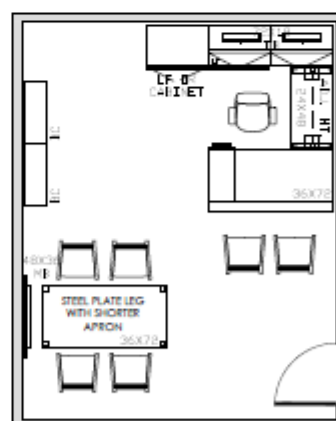


LEVEL 4 ACCESSIBLE OFFICE: 130 - 150 S.F.



LEVEL FIVE OFFICE: 175 - 220 S.F.
ADJUSTABLE HEIGHT BRIDGE - OPTIONAL

FACULTY: DEPARTMENT CHAIR, ASSISTANT OR ASSOCIATE VICE PRESIDENT OR DEAN, AND EQUAL OR SIMILAR PROFESSIONAL PERSONNEL REPORTING DIRECTLY TO THE VICE PRESIDENT OR OTHER LEVEL SIX PERSONNEL.



LEVEL SIX OFFICE: 200 - 300 S.F.

ADJUSTABLE HEIGHT BRIDGE - OPTIONAL

FACULTY: DEAN, VICE PRESIDENT, AND EQUAL PROFESSIONAL PERSONNEL REPORTING DIRECTLY TO THE PRESIDENT, GENERAL COUNSEL AND CHIEF OF STAFF.



BAYLOR UNIVERSITY
WACO, TEXAS

DEPARTMENT OF
FACILITIES MANAGEMENT

SCALE: 1/8"=1'-0"

PROJECT NO:

PROJECT NAME:

REVISION: Last Updated - 02/21/2022

FACULTY OFFICE STANDARDS

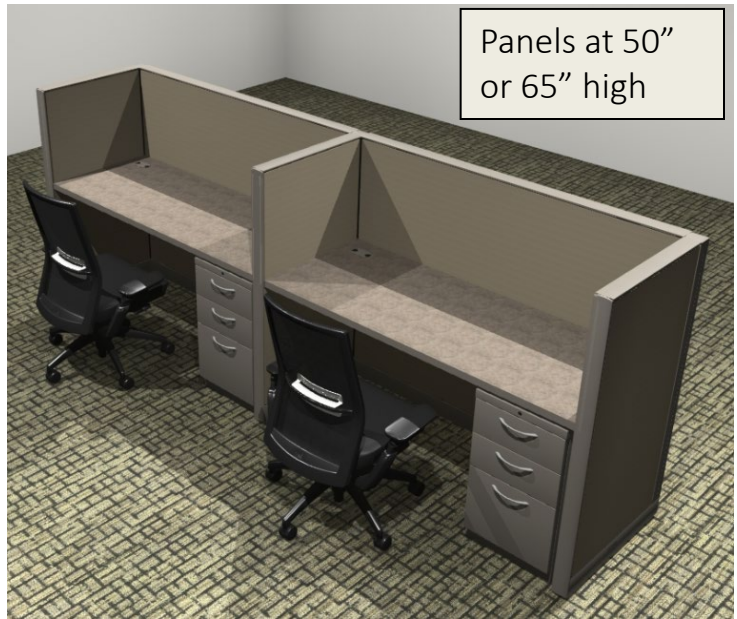
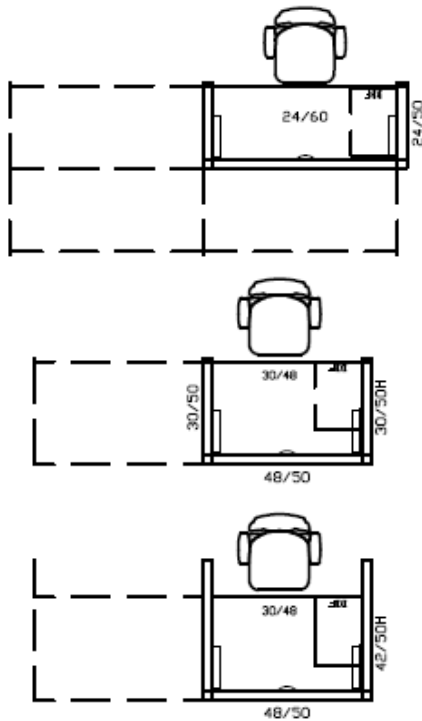
TYPICAL APPLICATIONS FOR STUDENT WORKERS THROUGH VICE PRESIDENTS

STAFF OFFICE STANDARDS

TYPICAL APPLICATIONS FOR STUDENT WORKERS THROUGH ASSISTANT VICE PRESIDENT LEVELS

LEVEL ONE WORKSTATION

Allsteel (Terrace DNA) Systems



Student & Staff: Workstation, Masters Student, Doctoral Student, and Post Doctoral Staff

Laminate



Paint



Panel Fabric

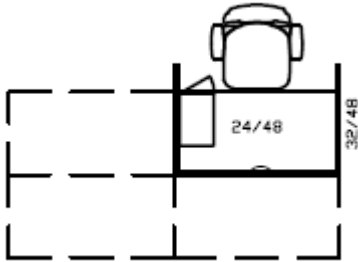


- Fabrics and finishes are predetermined standards and may not be customized.
- Painted metal on all system parts and under counter storage with fabric panels.
- Laminate worksurfaces with matching t-mold edge.
- Task seating to be determined by user group group; see standards for seating.

LEVEL ONE WORKSTATION

(Optional Height Adjustable)

Allsteel (Further) Systems



Student & Staff: Workstation, Masters Student, Doctoral Student, and Post Doctoral Staff

Laminate



Paint



Panel Fabric

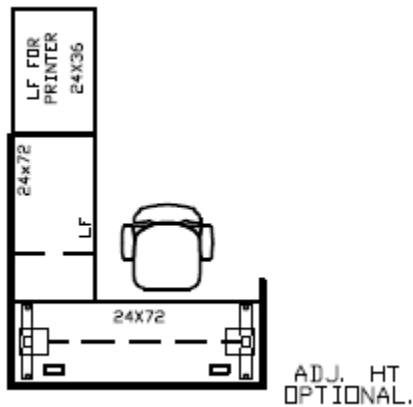


- Fabrics and finishes are predetermined standards and may not be customized.
- Painted metal on all system parts and under counter storage with fabric panels.
- Laminate worksurfaces with matching t-mold edge.
- Task seating to be determined by user group; see standards for seating.

RECEPTION/ ADMINISTRATIVE ASSISTANT

(Optional Height Adjustable)

JSI (Vision) – Casegoods



Staff: Student Worker, Administrative Associate, Office Manager, Typically Professional Staff who report directly to Level Five and Six management.

Laminate



Pulls

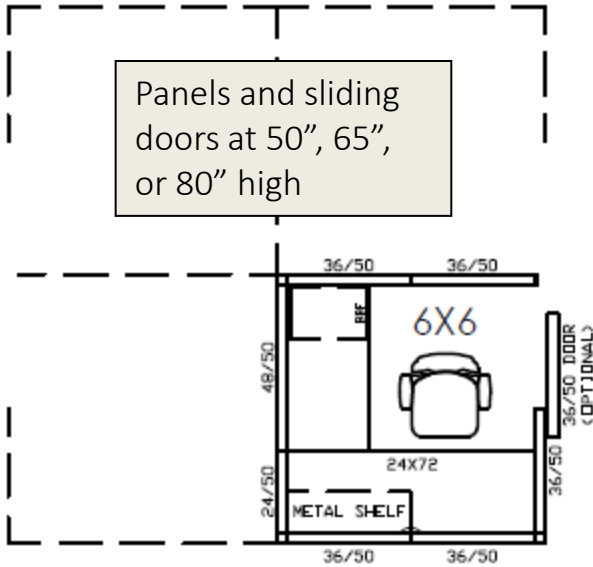


- Finishes are predetermined standards and may not be customized.
- All worksurfaces and file cabinets are wood or wood laminate.
- Task seating model to be determined by user group; see standards for seating.
- Office configurations may vary according to office sizes and limitations.

LEVEL TWO WORKSTATION

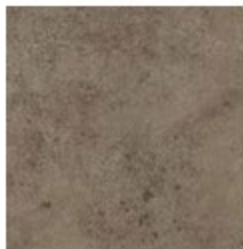
45 - 50 square feet

Allsteel (Terrace DNA) Systems



Faculty & Staff: Administrative Assistant, Technician, Clerk, Production Coordinator, Aide, University Research Administrator, Post Doctorate, Adjunct Professor, Part Time Lecturer, Visiting Professor.

Laminate



Paint



Panel Fabric

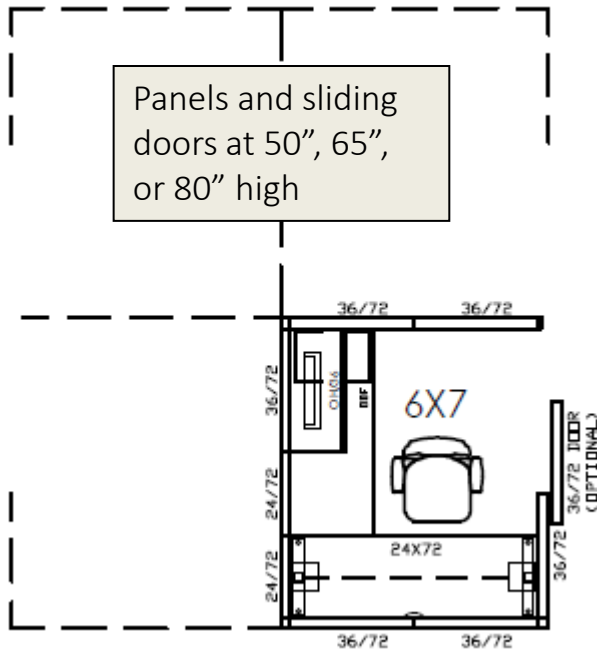


- Fabrics and finishes are predetermined standards and may not be customized.
- Painted metal on all system parts and under counter storage with fabric panels.
- Laminate worksurfaces with matching t-mold edge.
- Task seating to be determined by user group; see standards for seating.

LEVEL TWO WORKSTATION

45 - 50 square feet

Allsteel (Terrace DNA) Systems

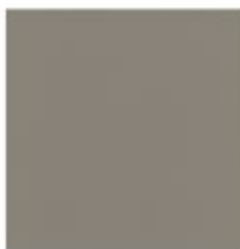


Faculty & Staff: Administrative Assistant, Technician, Clerk, Production Coordinator, Aide, University Research Administrator, Post Doctorate, Adjunct Professor, Part Time Lecturer, Visiting Professor.

Laminate



Paint



Panel Fabric

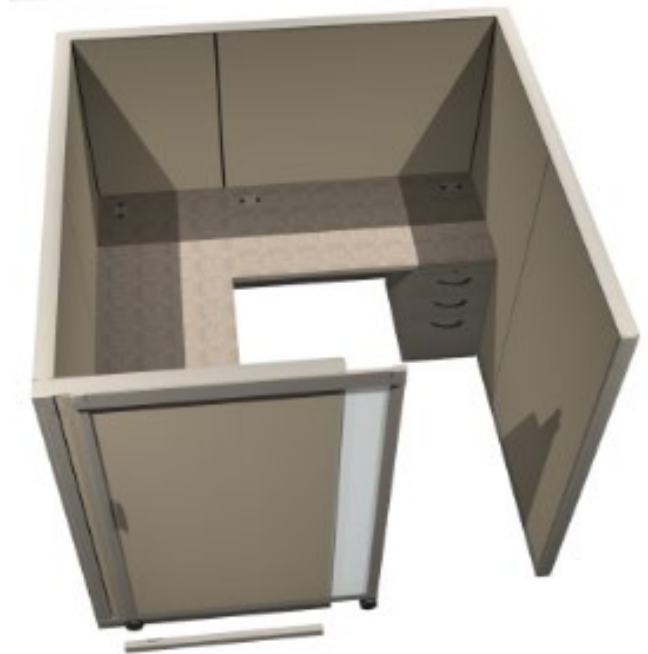
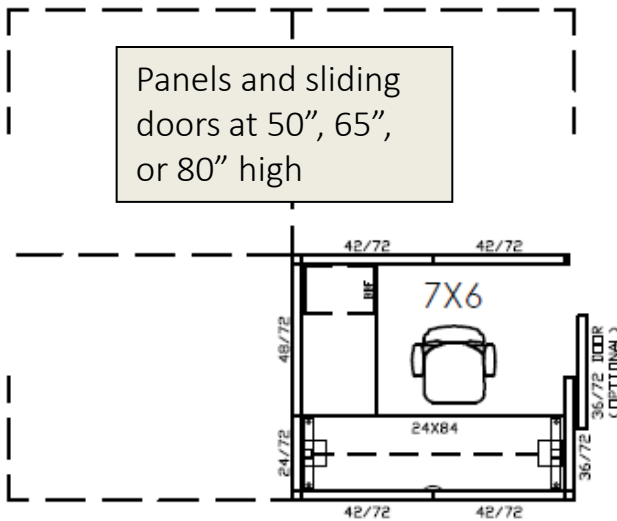


- Fabrics and finishes are predetermined standards and may not be customized.
- Painted metal on all system parts and under counter storage with fabric panels.
- Laminate worksurfaces with matching t-mold edge.
- Task seating to be determined by user group; see standards for seating.

LEVEL TWO WORKSTATION

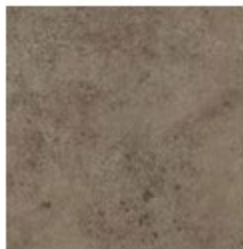
45 - 50 square feet

Allsteel (Terrace DNA) Systems



Faculty & Staff: Administrative Assistant, Technician, Clerk, Production Coordinator, Aide, University Research Administrator, Post Doctorate, Adjunct Professor, Part Time Lecturer, Visiting Professor.

Laminate



Paint



Panel Fabric



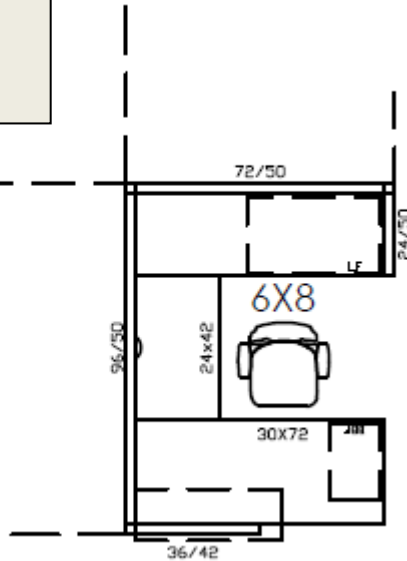
- Fabrics and finishes are predetermined standards and may not be customized.
- Painted metal on all system parts and under counter storage with fabric panels.
- Laminate worksurfaces with matching t-mold edge.
- Task seating to be determined by user group; see standards for seating.

LEVEL THREE WORKSTATION

55 - 65 square feet

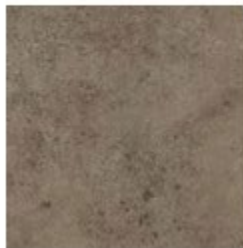
Allsteel (Terrace DNA) Systems

Panels and sliding doors at 50", 65", or 80" high



Faculty & Staff: Administrative Assistant, Office Manager, Part Time Lecturer, Visiting Professor, Technician, Clerk, Production Coordinator, Managers who supervise professional staff and who report directly to the directors or other level three personnel.

Laminate



Paint



Panel Fabric



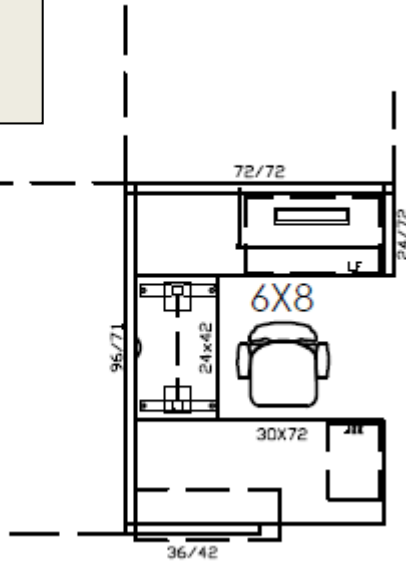
- Fabrics and finishes are predetermined standards and may not be customized.
- Mixture of painted metal parts and wood veneer worksurfaces.
- Task seating model to be determined by user group; see standards for seating.
- Office configurations may vary according to office sizes and limitations.

LEVEL THREE WORKSTATION

55 - 65 square feet

Allsteel (Terrace DNA) Systems

Panels and sliding doors at 50", 65", or 80" high

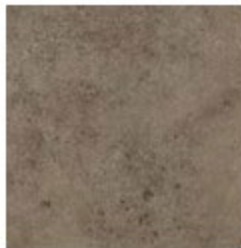


Faculty & Staff: Administrative Assistant, Office Manager, Part Time Lecturer, Visiting Professor, Technician, Clerk, Production Coordinator, Managers who supervise professional staff and who report directly to the directors or other level three personnel.

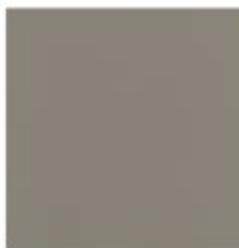
Veneer



Laminate



Paint

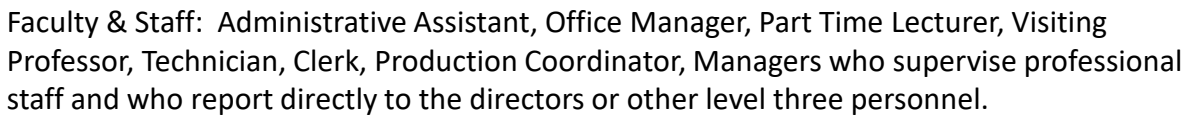


Panel Fabric



- Fabrics and finishes are predetermined standards and may not be customized.
- Mixture of painted metal parts and wood veneer worksurfaces.
- LED task lighting installed under overhangs.
- Task seating model to be determined by user group; see standards for seating.
- Office configurations may vary according to office sizes and limitations.

55 - 65 square feet
Allsteel (Terrace DNA) Systems

[illegible]

Panel Fabric



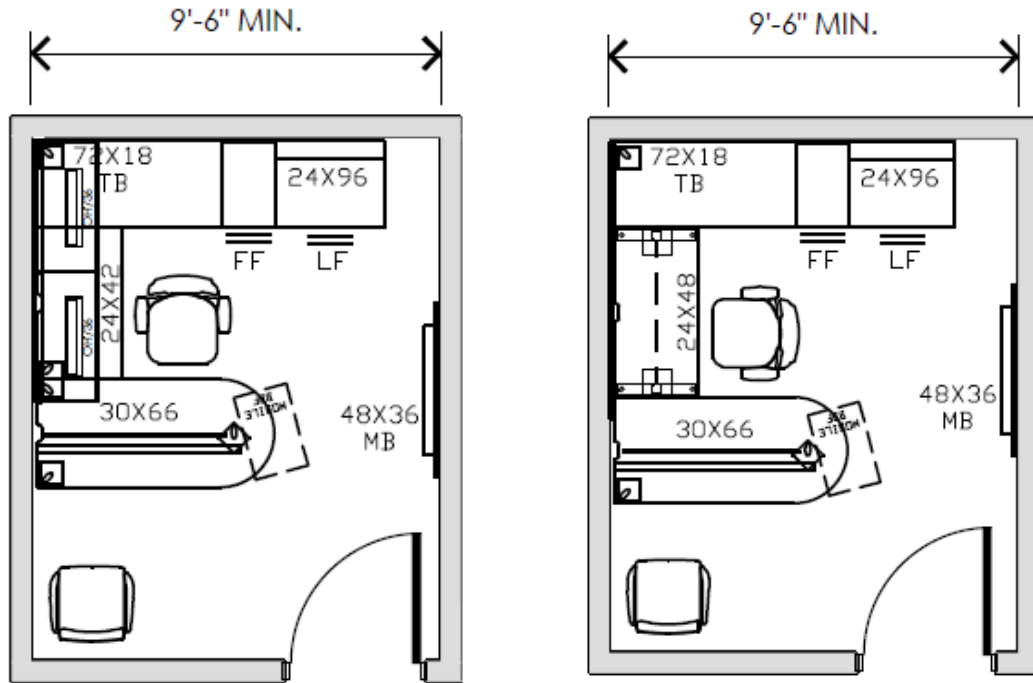
- 
- Baylor University®

16

LEVEL THREE OFFICE

110 – 130 square feet

Allsteel – Modular Casegoods



Faculty: Office Manager & Budget Manager as determined by Department, Development and Business Officer.

Staff: Academic Advisor, Senior Academic Consultant, Managers, Directors, Student Resident Director as determined by AVP.



- Fabrics and finishes are predetermined standards and may not be customized.
- Mixture of painted metal parts and wood veneer worksurfaces.
- LED task lighting installed under overheads.
- Task seating model to be determined by user group; see standards for seating.
- Office configurations may vary according to office sizes and limitations.

LEVEL THREE OFFICE – RENDERING

110 – 130 square feet

Allsteel – Modular Casegoods



•Renderings are for visual aid and reference only that should not be regarded as an accurate portrayal of the finished product.

•Fabrics and finishes are predetermined standards and may not be customized.

•Mixture of painted metal parts and wood veneer worksurfaces.

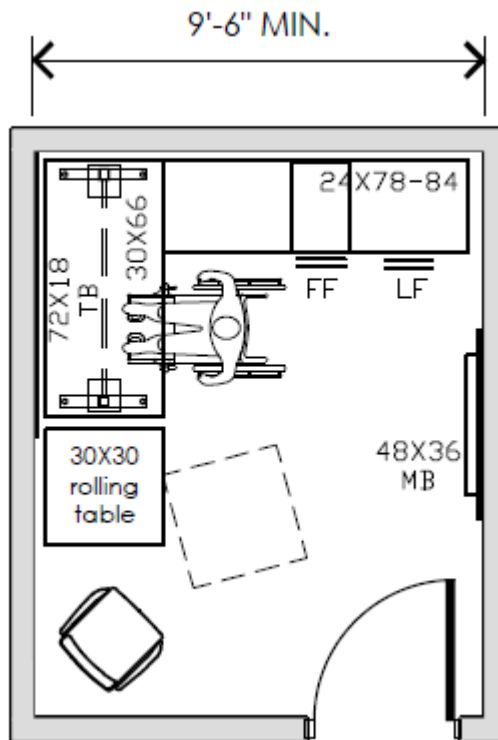
•LED task lighting installed under overheads.

•Office configurations may vary according to office sizes and limitations.

LEVEL THREE ACCESSIBLE OFFICE

110 – 130 square feet

Allsteel – Modular Casegoods



Faculty: Office Manager & Budget Manager as determined by Department, Development and Business Officer.

Staff: Academic Advisor, Senior Academic Consultant, Managers, Directors, Student Resident Director as determined by AVP.

Veneer



Edge



Paint



Tack Fabric



Pulls



Black or Silver

- Fabrics and finishes are predetermined standards and may not be customized.
- Mixture of painted metal parts and wood veneer worksurfaces.
- LED task lighting installed under overheads.
- Task seating model to be determined by user group; see standards for seating.
- Office configurations may vary according to office sizes and limitations.

LEVEL THREE ACCESSIBLE OFFICE – RENDERING

110 – 130 square feet

Allsteel – Modular Casegoods



•Renderings are for visual aid and reference only that should not be regarded as an accurate portrayal of the finished product.

•Fabrics and finishes are predetermined standards and may not be customized.

•Mixture of painted metal parts and wood veneer worksurfaces.

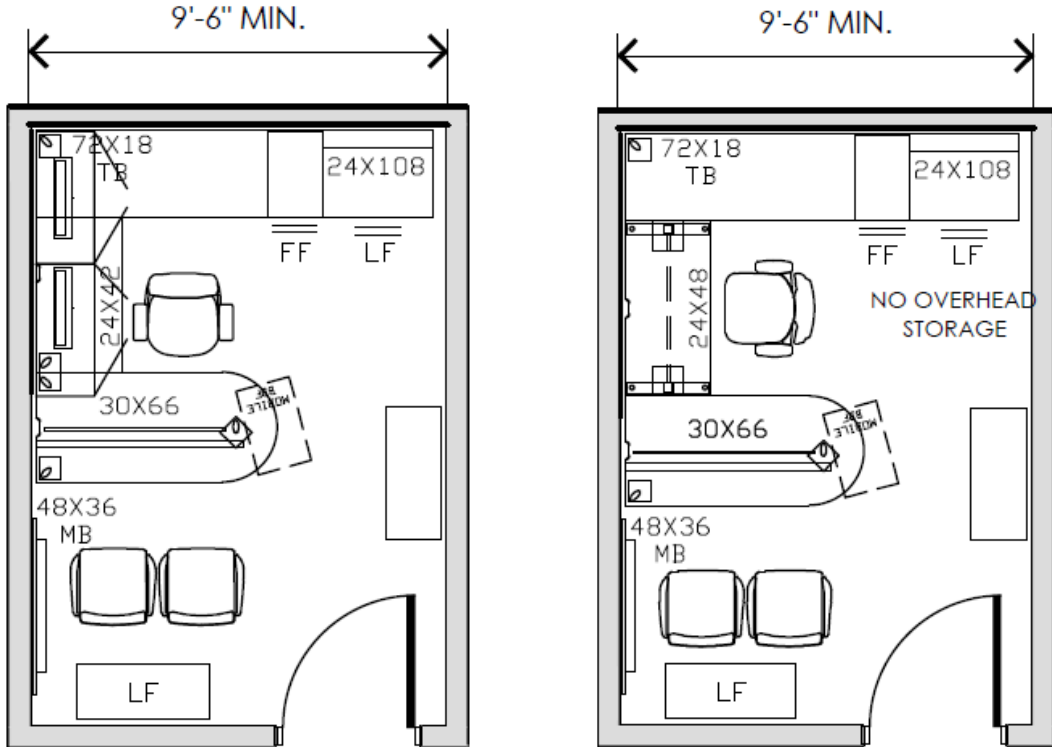
•LED task lighting installed under overheads.

•Office configurations may vary according to office sizes and limitations.

LEVEL FOUR OFFICE

130 – 150 square feet

Allsteel – Modular Casegoods



Adjustable height bridge – optional.

Faculty: Cherry Award Office, Full Time Professor, Full Time Lecturer.

Staff: Directors, Student Resident Director, other staff as determined by AVP.

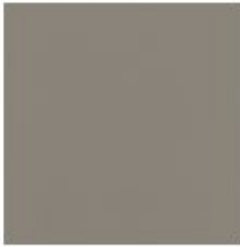
Veneer

Edge

Paint

Tack Fabric

Pulls



Black or Silver

- Fabrics and finishes are predetermined standards and may not be customized.
- Wood veneer worksurfaces, file pedestals, and overheads.
- Painted metal supports, filing, and trim.
- LED task lighting installed under overheads.
- Task seating model to be determined by user group; see standards for seating.
- Office configurations may vary according to office sizes and limitations.

LEVEL FOUR OFFICE – RENDERING

130 – 150 square feet

Allsteel – Modular Casegoods



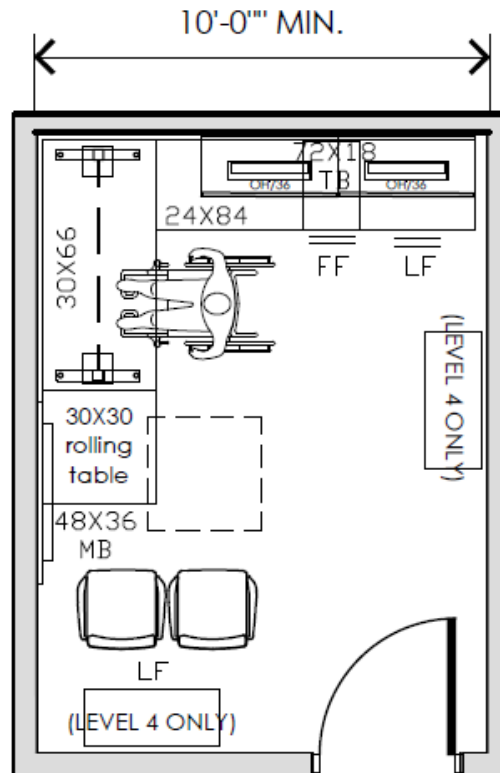
•**Renderings are for visual aid and reference only that should not be regarded as an accurate portrayal of the finished product.**

- Fabrics and finishes are predetermined standards and may not be customized.
- Wood veneer worksurfaces, file pedestals, file cabinets, bookcases, and overheads.
- LED task lighting installed under overheads.
- Office configurations may vary according to office sizes and limitations.

LEVEL FOUR ACCESSIBLE OFFICE

130 – 150 square feet

Allsteel – Modular Casegoods



Adjustable height bridge – optional.

Faculty: Cherry Award Office, Full Time Professor, Full Time Lecturer.

Staff: Directors, Student Resident Director, other staff as determined by AVP.

Veneer



Edge



Paint



Tack Fabric



Pulls



Black or Silver

- Fabrics and finishes are predetermined standards and may not be customized.
- Wood veneer worksurfaces, file pedestals, and overheads.
- Painted metal supports, filing, and trim.
- LED task lighting installed under overheads.
- Task seating model to be determined by user group; see standards for seating.
- Office configurations may vary according to office sizes and limitations.

LEVEL FOUR ACCESSIBLE OFFICE – RENDERING

130 – 150 square feet

Allsteel – Modular Casegoods



•Renderings are for visual aid and reference only that should not be regarded as an accurate portrayal of the finished product.

•Fabrics and finishes are predetermined standards and may not be customized.

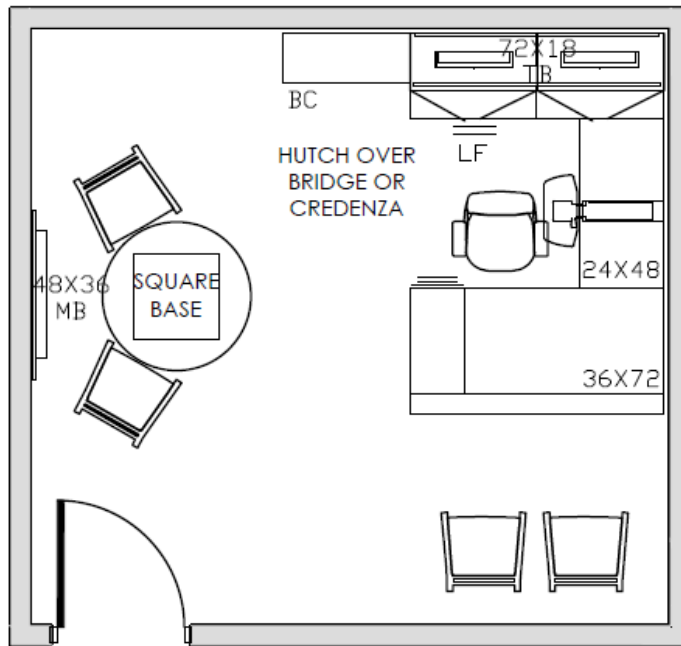
•Wood veneer worksurfaces, file pedestals, file cabinets, bookcases, and overheads.

•LED task lighting installed under overheads.

•Office configurations may vary according to office sizes and limitations.

LEVEL FIVE OFFICE

175 – 220 square feet
JSI (Brogan) Casegoods



Adjustable height bridge – optional.

Faculty: Department Chair, Assistant or Associate Vice President or Dean, and equal or similar professional personnel reporting directly to the Vice President, or other Level Six personnel.

Veneer



Tack Fabric



Pulls



- Fabrics and finishes are predetermined standards and may not be customized.
- Wood veneer worksurfaces, file pedestals, and overheads.
- Painted metal supports, filing, and trim.
- LED task lighting installed under overheads.
- Task seating model to be determined by user group; see standards for seating.
- Office configurations may vary according to office sizes and limitations.

LEVEL FIVE OFFICE – RENDERING

175 – 220 square feet
JSI (Brogan) Casegoods

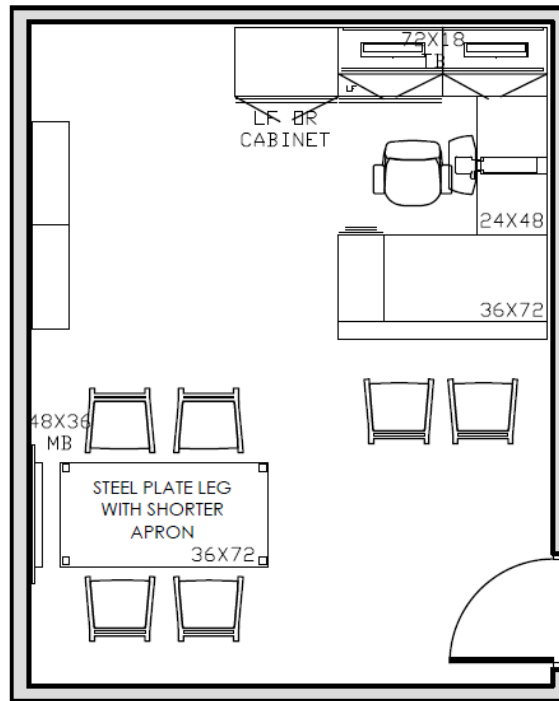


•**Renderings are for visual aid and reference only that should not be regarded as an accurate portrayal of the finished product.**

- Fabrics and finishes are predetermined standards and may not be customized.
- Wood veneer worksurfaces, file pedestals, file cabinets, bookcases, and overheads.
- LED task lighting installed under overheads.
- Office configurations may vary according to office sizes and limitations.

LEVEL SIX OFFICE

200 – 300 square feet
JSI (Brogan) Casegoods



Adjustable height bridge – optional.

Faculty: Dean, Vice President, and equal professional personnel reporting directly to the President, General Counsel, and Chief of Staff.

Veneer



Tack Fabric



Pulls



- Fabrics and finishes are predetermined standards and may not be customized.
- Wood veneer worksurfaces, file pedestals, and overheads.
- Painted metal supports, filing, and trim.
- LED task lighting installed under overheads.
- Task seating model to be determined by user group; see standards for seating.
- Office configurations may vary according to office sizes and limitations.

LEVEL SIX OFFICE – RENDERING

200 – 300 square feet
JSI (Brogan) Casegoods



•**Renderings are for visual aid and reference only that should not be regarded as an accurate portrayal of the finished product.**

- Fabrics and finishes are predetermined standards and may not be customized.
- Wood veneer worksurfaces, file pedestals, file cabinets, bookcases, and overheads.
- LED task lighting installed under overheads.
- Office configurations may vary according to office sizes and limitations.

LEVEL 5 & 6 OFFICE – WITH ADJUSTABLE HEIGHT BRIDGE

JSI (Brogan) Casegoods



- **Renderings are for visual aid and reference only that should not be regarded as an accurate portrayal of the finished product.**
- Fabrics and finishes are predetermined standards and may not be customized.
- Wood veneer worksurfaces, file pedestals, file cabinets, bookcases, and overheads.
- LED task lighting installed under overheads.
- Office configurations may vary according to office sizes and limitations.

STANDING HEIGHT DESK

HAT – Adjustable



HAT – Adjustable
Height Desk
(electric)



HAT – Adjustable
Height Corner
Desk (electric)

- Finishes are for reference only and some are predetermined standards
- Existing desks or bridges can typically be retrofitted to become an adjustable height work surface
- Legs are Silver or Black

STUDENT OR HYBRID OFFICE LOCKER

Allsteel – RADI

Height:

50"H or 65"H

Width:

12"W or 24"W

Depth:

18"D



- Finishes are for reference only and some are predetermined standards

- Pulls are Black or Silver

LEVEL 1-3 TASK SEATING

Allsteel – Lyric



- Fabrics and finishes are for reference only and some are predetermined standards
- Approved mesh colors are Dusk, Black, and Mist
- Approved arm, base, and frame colors are Black and Titanium

LEVEL 3-6 TASK SEATING

Allsteel – Evo Mesh



- Fabrics and finishes are for reference only and some are predetermined standards
- Approved mesh colors are Dusk, Black, and Mist
- Approved arm, base, and frame colors are Black and Titanium

LEVEL 4-6 TASK SEATING

Allsteel – Acuity

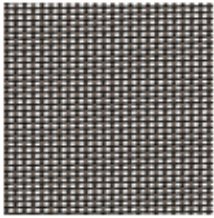


- Fabrics and finishes are for reference only and some are predetermined standards
- Approved mesh colors are Dusk, Black, and Mist
- Approved arm, base, and frame colors are Black and Titanium

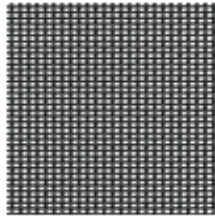
CONFERENCE SEATING

Allsteel – Clarity

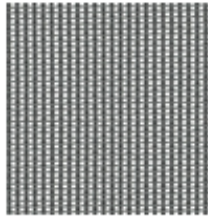
MESH COLORS



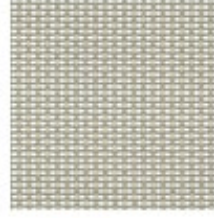
Clay



Flint



Graphite



Taupe



- Fabrics and finishes are for reference only and some are predetermined standards
- Aluminum frame finishes are White, Carbon, or Silver
- Approved mesh colors are Taupe, Graphite, Flint, or Clay

CONFERENCE SEATING

Allsteel – Evo Fabric & Mesh Back



- Fabrics and finishes are for reference only and some are predetermined standards
- Approved mesh colors are Dusk, Black, and Mist
- Approved arm, base, and frame colors are Black and Titanium

TRADITIONAL CONFERENCE SEATING

JSI – Madison Guest & Swivel



- Fabrics and finishes are for reference only and some are predetermined standards
- Wood veneer in Autumn Cherry or Medium Cherry

BAR HEIGHT STOOLS CAFE OR STUDY



JSI – Knox Bar
Height Stool



Ki – Strive Cafe
Stool



- Fabrics and finishes are for reference only and some are predetermined standards
- Wood veneer in Light Cherry or Medium Walnut

BAR HEIGHT STOOLS CAFE OR STUDY

Allsteel – Lyric
Multipurpose Stool



Allsteel – Inspire
Stool



•Fabrics are for reference only and some finishes are predetermined standards

TASK STOOL CLASSROOM OR STUDIO



Allsteel – Inspire Stool
Arms or armless



Ki – Strive Task Stool
Arms or armless

•Fabrics are for reference only and some finishes are predetermined standards

TASK STOOL LABORATORY



Cramer – Helix Lab Chair



Global Industries –
Biofit Stool

•Fabrics are for reference only and some finishes are predetermined standards

LEVEL 1-6 GUEST SEATING

JSI – Knox



- Fabrics and finishes are for reference only and some are predetermined standards
- Arms are wood veneer in Medium Cherry or Burnished Cherry
- Legs and supports are painted black metal or silver

LEVEL 5-6 GUEST SEATING

JSI – Gatsby



- Fabrics and finishes are for reference only and some are predetermined standards
- Wood veneer in Autumn Cherry or Medium Cherry

CLASSROOM TABLES

TYPICAL



Allsteel – Aware Tables
(24x48, 24x60, 24x72,
30x60)



KI – Trek Tables
(24x48, 24x60, 24x72, 30x60)

- Finishes are for reference only and some are predetermined standards
- Options include fixed legs, legs with casters, and flip and fold
- Tops and edge are plastic laminate
- Legs and supports are painted Black or Silver

CAFÉ OR BREAK ROOM TABLES



JSI – Menu Tables
(30", 36", 42" sizes)



KI – Barron Tables
(30", 36", 42" sizes)

- Finishes are for reference only and some are predetermined standards
- Tops and edge are plastic laminate
- Legs and supports are painted Black or Silver

CAFÉ OR STUDY TALL TABLES



JSI – Reef Layered Table
(power optional)



Allsteel – Harvest Tables
(power optional)

- Finishes are for reference only and some are predetermined standards
- Tops and edge are plastic laminate
- Powered tables allowed where power exists in the floor or wall

MARKER BOARDS

TYPICAL



Claridge Markerboard - Premiere
Series Revolving Mobile
4'x6', 3'-6"x5', 3'x4')



Allsteel – Aware Markerboard
(36x50, 36x72, 60x72)

- Finishes are for reference only and some are predetermined standards
- Sizes vary from 4' to 6' wide
- Legs and supports are Silver or Black

MARKER BOARDS

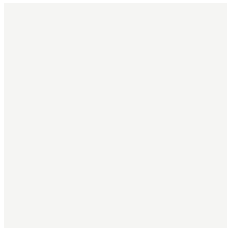
TYPICAL



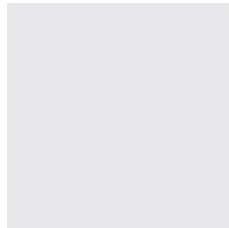
Kelly Green



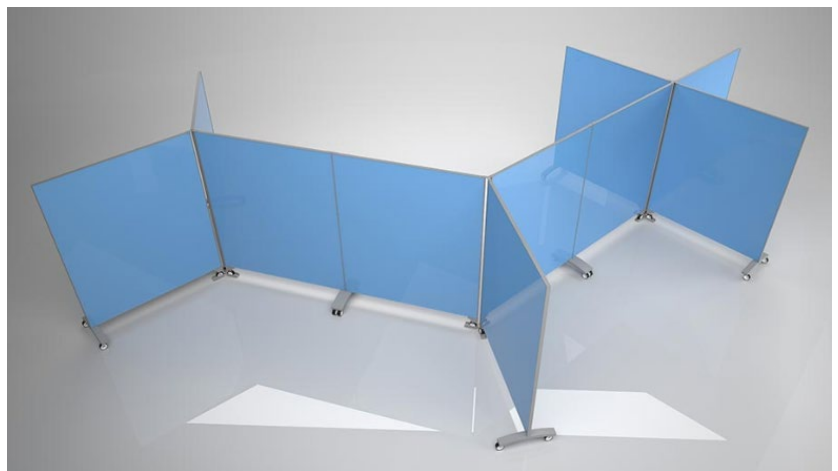
Yellow Sun



White



Satin Silver



Clarus – Go-Mobile
Rolling Glass Whiteboards
Can create privacy walls
(XS 40x54, S 60x54, M 40x73,
XL 60x73)

- Finishes are for reference only and some are predetermined standards
- Sizes vary
- Legs and supports are painted Black or Silver

PREFERRED CLASSROOM FURNITURE AND FINISHES

KI – Strive Chairs with Allsteel – Aware Tables



FLANNEL
PFN LRV-2



SAND
PSA LRV-61



LIGHT TONE
PLG LRV-65



CLASSIC LINEN
LCI



SHADOW
ZEPHYR
LSR



RIVER CHERRY
LRY



- Fabrics and finishes are for reference only and some are predetermined standards
- Approved paint colors for legs, frame, and supports are Black and Silver
- Approved laminate colors are Shadow Zephyr, Classic Linen, and River Cherry

CLASSROOM SEATING FOR COMPUTER ROOMS



KI – Strive
(Poly bac, upholstered seat on 5
star base, with arms)



KI – Strive
(Poly bac, upholstered seat on 5
star base, without arms)

- Fabrics are for reference only and some finishes are predetermined standards
- Legs and supports are painted Black or Silver

CLASSROOM SEATING

TABLET ARM & TYPICAL



KI – Strive Chair
(Oversized Tablet Arm, poly back,
upholstered seat, with tablet arm)



KI – Strive Chair
(Poly back, upholstered seat,
armless, with casters)

- Fabrics and finishes are for reference only and some are predetermined standards
- Approved paint colors for legs, frame, and supports are Black and Silver
- Approved laminate colors are Shadow Zephyr, Classic Linen, and River Cherry

CLASSROOM SEATING

TYPICAL



Allsteel – Seek Chair
(Mesh back, arms, and
upholstered seat with casters)



Allsteel – Inspire Chair
(Plastic back, upholstered seat,
armless and with casters)

- Fabrics and finishes are for reference only and some are predetermined standards
- Approved paint colors for legs, frame, and supports are Black and Silver

CLASSROOM SEATING

MOVEABLE TABLET ARMS

KI – Learn2 (Strive poly back, upholstered seat, oversized tablet arm, with casters, and storage optional)



Steelcase – Node Tripod
(Poly chair on casters with tablet arm)



- Fabrics are for reference only and some finishes are predetermined standards
- Legs and supports are painted Black or Silver

LOUNGE SEATING OPTIONS



Arcadia – Achella
Lounge



Arcadia – Achella
Loveseat

- Arcadia is a preferred furniture manufacturer, and the Achella Lounge is an available option, but other Arcadia products may be acceptable
- Fabrics are for reference only and some finishes are predetermined standards
- Legs and supports are painted Black or Silver

LOUNGE SEATING OPTIONS



Martin Bratrud –
Edinburgh Lounge



Martin Bratrud –
Edinburgh Loveseat

- Martin Bratrud is a preferred furniture manufacturer, and the Edinburgh Lounge is an available option, but other Martin Bratrud products may be acceptable
- Fabrics are for reference only and some finishes are predetermined standards
- Legs and supports are painted Black or Silver

LOUNGE SEATING OPTIONS



Martin Bratrud –
Gleneagles Lounge



Martin Bratrud –
Gleneagles Loveseat

- Martin Bratrud is a preferred furniture manufacturer, and the Gleneagles Lounge is an available option, but other Martin Bratrud products may be acceptable
- Fabrics are for reference only and some finishes are predetermined standards
- Legs and supports are painted Black or Silver

LOUNGE SEATING OPTIONS



JSI - Connect



JSI – Collective Motion

- JSI is a preferred furniture manufacturer, and the Connect or Collective Motion Lounge pieces are available options, but other JSI products may be acceptable
- Fabrics are for reference only and some finishes are predetermined standards
- Legs and supports are painted Black or Silver

EXTERIOR TABLES & CHAIRS

OPTIONS



Powdercoated Metal (Metallic)*



Bronze



Silver

Landscapeforms
Catena Chair



Landscapeforms
Catena Table

•Finishes are predetermined and only Bronze and Silver are approved

EXTERIOR TABLES & CHAIRS

OPTIONS



•Finishes are predetermined and only Bronze and Silver are approved

EXTERIOR TABLES & CHAIRS OPTIONS



Landscapeforms
Wellspring Chair



Landscapeforms
Wellspring Table

•Finish color is for reference only and some are predetermined standards

EXTERIOR FURNITURE

DUMOR – BENCH & RECEPTACLE



Dumor – Bench
119 (6' long)



Dumor – Trash Can
(84-32)



BRONZE

- Bronze is the only approved finish for Dumor Furniture