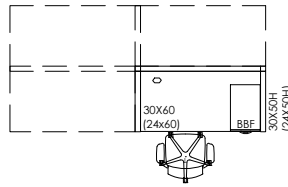


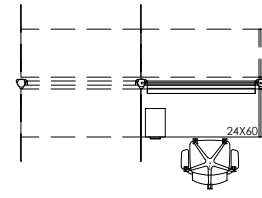
LEVEL ONE WORKSTATION

PANEL HEIGHT OPTIONS: 50" OR 65".

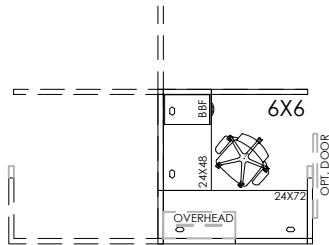
STUDENTS & STAFF: STUDENT WORKER, MASTERS STUDENT, DOCTORAL STUDENT, POST DOCTORAL STAFF.



LEVEL ONE WORKSTATION



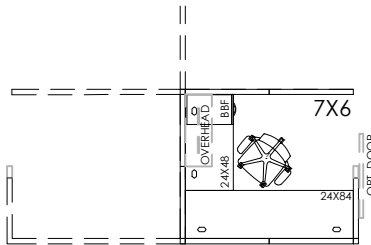
LEVEL ONE WORKSTATION



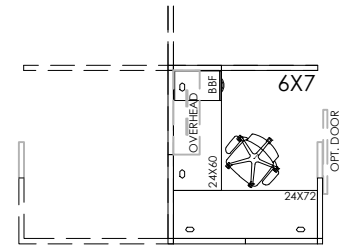
LEVEL TWO WORKSTATION: 45 - 50 S.F.

PANEL HEIGHT OPTIONS: 50", 65", OR 80"; OPTIONAL DOOR AVAILABLE ON 65" AND 80" PANELS; OPTIONAL OVERHEAD SHELVING/STORAGE; OPTIONAL ADJUSTABLE HEIGHT DESK &/OR BRIDGE.

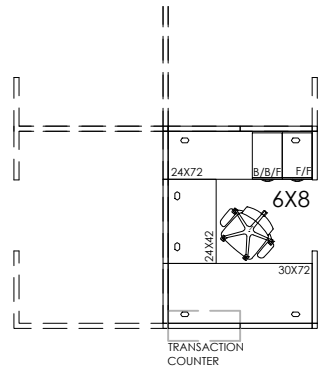
FACULTY & STAFF: ADMINISTRATIVE ASSISTANT, TECHNICIAN, FINANCIAL ADMINISTRATOR, PRODUCTION COORDINATOR, AIDE, UNIVERSITY RESEARCH ADMINISTRATOR, POST DOCTORAL STAFF, ADJUNCT PROFESSOR, PART TIME LECTURER, PART TIME PROFESSOR, VISITING PROFESSOR.



LEVEL TWO WORKSTATION: 45 - 50 S.F.



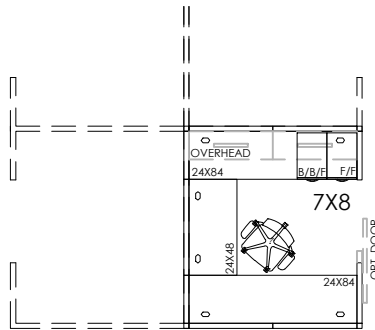
LEVEL TWO WORKSTATION: 45 - 50 S.F.



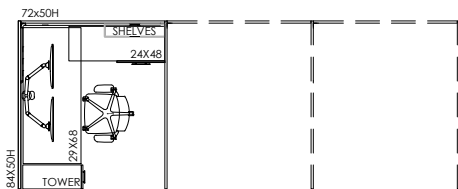
LEVEL THREE WORKSTATION: 55 - 65 S.F.

PANEL HEIGHT OPTIONS: 50", 65", OR 80"; OPTIONAL DOOR AVAILABLE ON 65" AND 80" PANELS; OPTIONAL OVERHEAD STORAGE; OPTIONAL ADJUSTABLE HEIGHT DESK &/OR BRIDGE; OPTIONAL TRANSACTION COUNTER.

FACULTY & STAFF: ADMINISTRATIVE ASSISTANT OR ASSOCIATE, TECHNICIAN, FINANCIAL ADMINISTRATOR, PRODUCTION COORDINATOR, OFFICE MANAGER, PART TIME LECTURER, VISITING PROFESSOR, MANAGERS WHO SUPERVISE PROFESSIONAL STAFF AND WHO REPORT DIRECTLY TO THE DIRECTORS OR OTHER LEVEL THREE PERSONNEL.



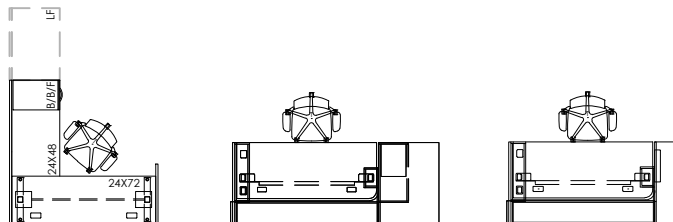
LEVEL THREE WORKSTATION: 55 - 65 S.F.



ALTERNATE OPEN OFFICE SYSTEMS

PANEL HEIGHT: 50"; OPTIONAL OPEN SHELVING; OPTIONAL ADJUSTABLE HEIGHT DESK.

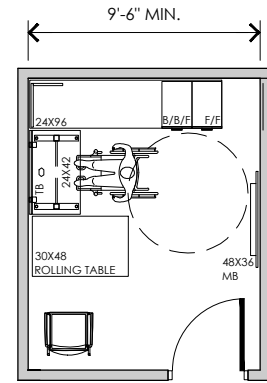
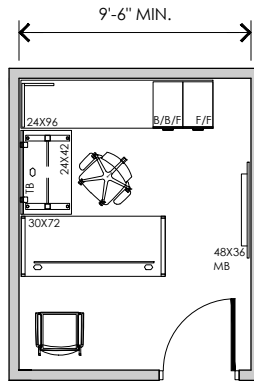
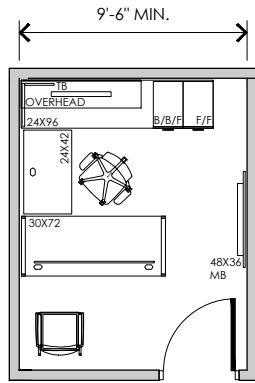
LEVEL TWO OR THREE FACULTY & STAFF.



RECEPTIONIST / ADMINISTRATIVE ASSISTANT:

OPTIONAL ADJUSTABLE HEIGHT DESK; OPTIONAL PEDESTAL (B/B/F); OPTIONAL LATERAL FILE.

STAFF: STUDENT WORKER, ADMINISTRATIVE ASSOCIATE, OFFICE MANAGER, PROFESSIONAL STAFF WHO REPORT DIRECTLY TO LEVEL FIVE AND SIX MANAGEMENT.



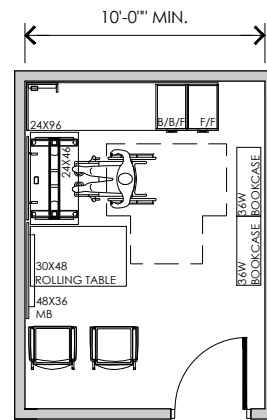
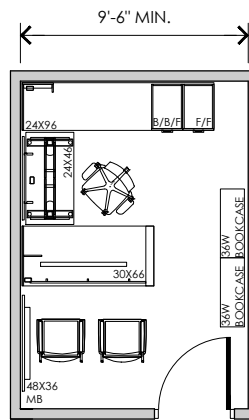
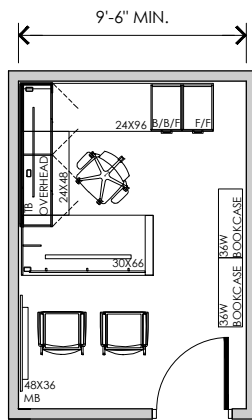
LEVEL THREE OFFICE: 110 - 130 S.F.

LEVEL THREE OFFICE: 110 - 130 S.F.

LEVEL 3 ACCESSIBLE OFFICE: 110 - 130 S.F.

OPTIONAL OVERHEAD STORAGE; OPTIONAL ADJUSTABLE HEIGHT BRIDGE.

FACULTY: OFFICE MANAGER & BUDGET/FINANCIAL MANAGER AS DETERMINED BY DEPARTMENT, DEVELOPMENT AND BUSINESS OFFICER.
STAFF: ACADEMIC ADVISOR, SENIOR ACADEMIC CONSULTANT, MANAGERS, DIRECTORS, STUDENT RESIDENT DIRECTOR, OTHER STAFF AS DETERMINED BY AVP.



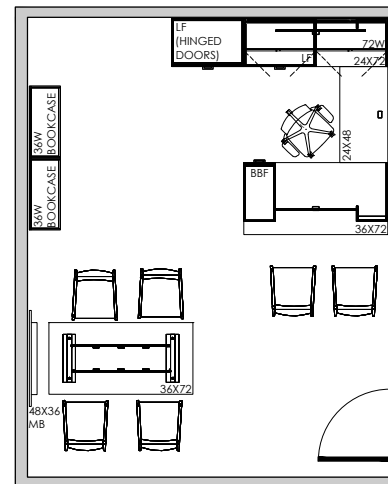
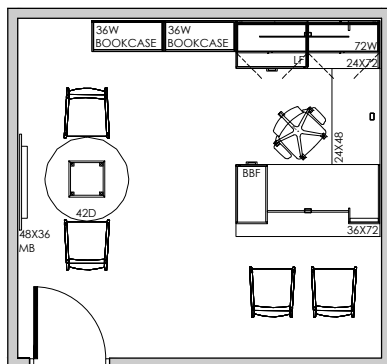
LEVEL FOUR OFFICE: 130 - 150 S.F.

LEVEL FOUR OFFICE: 130 - 150 S.F.

LEVEL 4 ACCESSIBLE OFFICE: 130 - 150 S.F.

OPTIONAL OVERHEAD STORAGE; OPTIONAL ADJUSTABLE HEIGHT BRIDGE (24x46).

FACULTY: CHERRY AWARD OFFICE, FULL TIME PROFESSOR, FULL TIME LECTURER.
STAFF: DIRECTORS, STUDENT RESIDENT DIRECTOR, OTHER STAFF AS DETERMINED BY AVP.



LEVEL FIVE OFFICE: 175 - 220 S.F.

OPTIONAL ADJUSTABLE HEIGHT BRIDGE (24x46).

FACULTY: DEPARTMENT CHAIR, ASSISTANT OR ASSOCIATE VICE PRESIDENT OR DEAN, EQUAL OR SIMILAR PROFESSIONAL PERSONNEL REPORTING DIRECTLY TO THE VICE PRESIDENT OR OTHER LEVEL SIX PERSONNEL.

LEVEL SIX OFFICE: 200 - 300 S.F.

OPTIONAL ADJUSTABLE HEIGHT BRIDGE (24x46).

FACULTY: DEAN, VICE PRESIDENT, EQUAL PROFESSIONAL PERSONNEL REPORTING DIRECTLY TO THE PRESIDENT, GENERAL COUNSEL, AND CHIEF OF STAFF.